

CUST. MODEL:	REF.
CUST. P/N	DWG FILE:

DESCRIPTION CONTROL			
REV.	DESC.	DATE	APP.

### SPFCIFICATIONS

Current Rating:

1.0 Amp

Insulator Resistance:

1000 Megohms min.

Contact Resistance:

25 m ohms max.

Dielectric withstanding:

AC 500V/minute

Operating Temperature:

-40°C to +105°C

Contact Material:

Brass

Insulator Material:

High Temperature Thermoplastic

+Glass Fibre UL94V-0

Color: Black

Finish:

Gold, Tin or Duplex plated

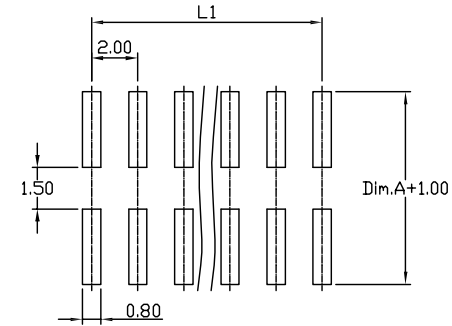
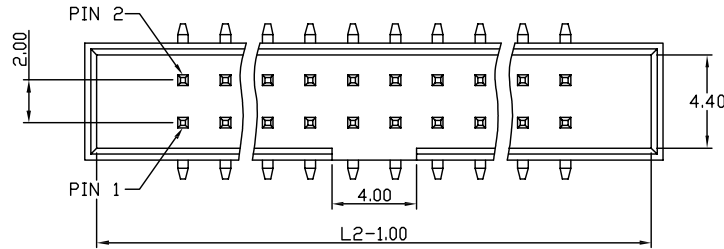
Standard: Gold flash all over

Duplex plating:

Gold plated on contact area

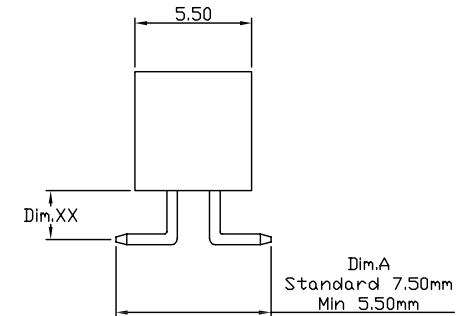
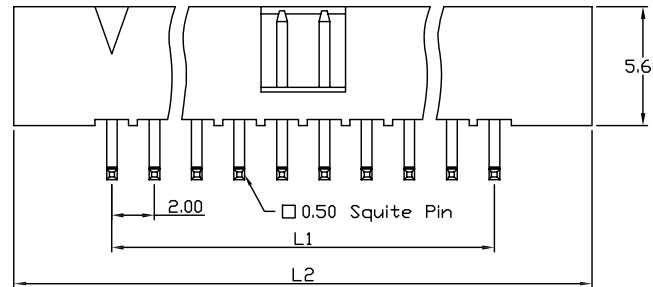
Tin on solder area

**RoHS Compliance**



RECOMMENDED P.C.B LAYOUT

Cir-cuits	Dimension (mm)	
	L1	L2
2x3	4.00	13.20
2x4	6.00	15.20
2x5	8.00	17.20
2x6	10.00	19.20
2x7	12.00	21.20
2x8	14.00	23.20
2x10	18.00	27.20
2x12	22.00	31.20
2x13	24.00	33.20
2x15	28.00	37.20
2x17	32.00	41.20
2x20	38.00	47.20
2x22	42.00	51.20
2x25	48.00	57.20
2x34	66.00	75.20



BH N B-20 M XX 2 XX-01G-56 0 - XX

N: Nylon-6T  
 Color  
 Pitch 2.0  
 SMT Type  
 Square Pin  
 Row of Pin  
 Number of Contact  
 Dim.XX  
 0: Without Post  
 Plastic High 56:5.6  
 G: Gold Plated  
 T: Tin Plated  
 H: Duplex Plated  
 Contact Plating  
 01 Normal  
 03 3u"  
 :  
 :

UNLESS OTHERWISE SPECIFIED SURFACE FINISH ALL OVER TOLERANCES mm  METRIC  .X = ±0.38 .XX = ±0.25	DRAW:	DATE:	TITLE:
	CHUBBY	01/10/07	2.0 Box Header SMT Type Plastic High 5.6
	CHECK:	APPROVE:	MODEL CODE:
	KEVIN	TONY	BHNB-20M052XX-01G-560-10
			<b>誠州電子有限公司</b> <i>Sincere State Electronics Co.,Ltd.</i>

NO	DESCRIPTION	QTY

CUST. MODEL:	REF.
CUST. P/N	DWG FILE:

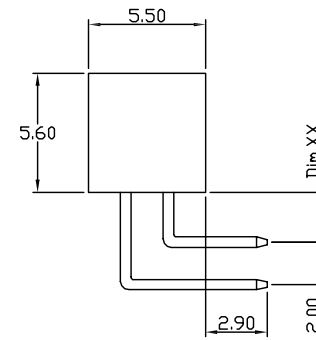
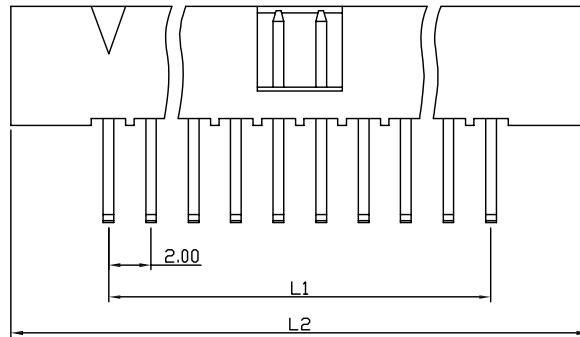
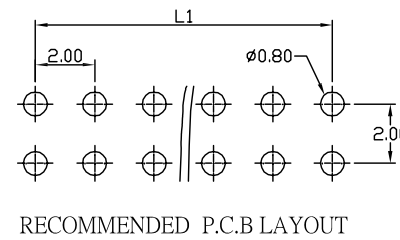
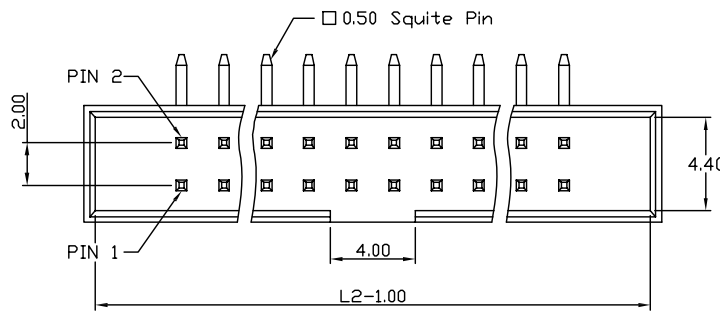
DESCRIPTION CONTROL			
REV.	DESC.	DATE	APP.

### SPFCIFICATIONS

- Current Rating: 1.0 Amp
- Insulator Resistance: 1000 Megohms min.
- Contact Resistance: 25 m ohms max.
- Dielectric withstanding: AC 500V/minute
- Operating Temperature: -40°C to +105°C
- Contact Material: Brass
- Insulator Material: High Temperature Thermoplastic +Glass Fibre UL94V-0
- Color: Black
- Finish: Gold, Tin or Duplex plated  
Standard: Gold flash all over  
Duplex plating: Gold plated on contact area  
Tin on solder area

**RoHS Compliance**

Cir-cuits	Dimension (mm)	
	L1	L2
2x3	4.00	13.20
2x4	6.00	15.20
2x5	8.00	17.20
2x6	10.00	19.20
2x7	12.00	21.20
2x8	14.00	23.20
2x10	18.00	27.20
2x12	22.00	31.20
2x13	24.00	33.20
2x15	28.00	37.20
2x17	32.00	41.20
2x20	38.00	47.20
2x22	42.00	51.20
2x25	48.00	57.20
2x34	66.00	75.20



**BH N B-20 R XX 2 XX-01G-56 0 - XX**

- N: Nylon-6T
- Color
- Pitch 2.0
- Right Angle Type
- Square Pin
- Row of Pin
- Number of Contact
- Dim.XX
- 0: Without Post
- Plastic High 56:5.6
- G: Gold Plated
- T: Tin Plated
- H: Duplex Plated
- Contact Plating
- 01 Normal
- 03 3u"
- : :

UNLESS OTHERWISE SPECIFIED SURFACE FINISH ALL OVER TOLERANCES mm

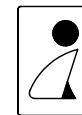
METRIC

.X = ±0.38

.XX = ±0.25

DRAW:	DATE:
CHUBBY	01/10/07
CHECK:	APPROVE:
KEVIN	TONY

<b>TITLE:</b>	2.0 Box Header Right Angle Type Plastic High 5.6
<b>MODEL CODE:</b>	BHNB-20R052XX-01G-560-XX



**誠州電子有限公司**  
Sincere State Electronics Co.,Ltd.

NO	DESCRIPTION	QTY

CUST. MODEL:	REF.
CUST. P/N	DWG FILE:

DESCRIPTION CONTROL			
REV.	DESC.	DATE	APP.

### SPFCIFICATIONS

Current Rating:

1.0 Amp

Insulator Resistance:

1000 Megohms min.

Contact Resistance:

25 m ohms max.

Dielectric withstanding:

AC 500V/minute

Operating Temperature:

-40°C to +105°C

Contact Material:

Brass

Insulator Material:

High Temperature Thermoplastic

+Glass Fibre UL94V-0

Color: Black

Finish:

Gold, Tin or Duplex plated

Standard: Gold flash all over

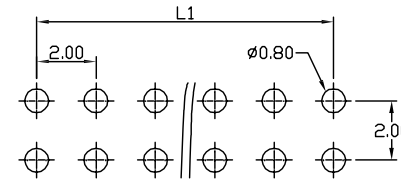
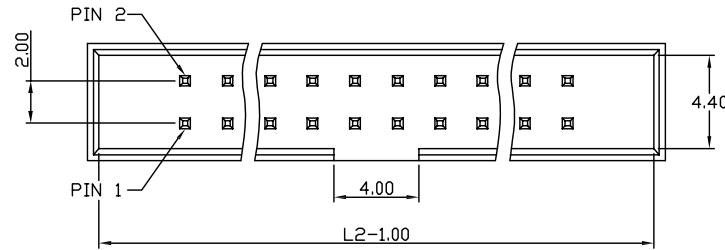
Duplex plating:

Gold plated on contact area

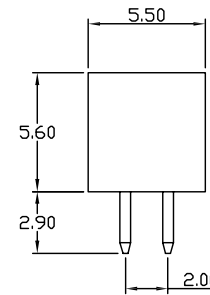
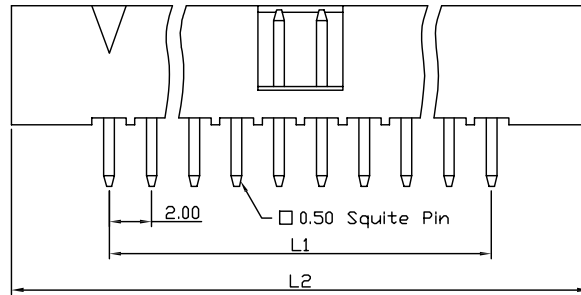
Tin on solder area

**RoHS Compliance**

Cir-cuits	Dimension (mm)	
	L1	L2
2x3	4.00	13.20
2x4	6.00	15.20
2x5	8.00	17.20
2x6	10.00	19.20
2x7	12.00	21.20
2x8	14.00	23.20
2x10	18.00	27.20
2x12	22.00	31.20
2x13	24.00	33.20
2x15	28.00	37.20
2x17	32.00	41.20
2x20	38.00	47.20
2x22	42.00	51.20
2x25	48.00	57.20
2x34	66.00	75.20



RECOMMENDED P.C.B LAYOUT



BH N B-20 V XX 2 XX-01G-56 0

- N: Nylon-6T
- Color
- Pitch 2.0
- Straight Type
- Square Pin
- Row of Pin
- Number of Contact
- 0: Without Post
- Plastic High 56:5.6
- G: Gold Plated
- T: Tin Plated
- H: Duplex Plated
- Contact Plating
- 01 Normal
- 03 3u"

UNLESS OTHERWISE SPECIFIED SURFACE FINISH ALL OVER TOLERANCES mm  METRIC  .X = ±0.38 .XX = ±0.25	DRAW:	DATE:	TITLE:
	CHUBBY	01/10/07	2.0 2x22P Box Header Straight Type Plastic High 5.6
	CHECK:	APPROVE:	MODEL CODE:
	KEVIN	TONY	BHNB-20V05244-01G-560
			<b>誠州電子有限公司</b> <i>Sincere State Electronics Co.,Ltd.</i>

NO	DESCRIPTION	QTY

CUST. MODEL:	REF.
CUST. P/N	DWG FILE:

DESCRIPTION CONTROL			
REV.	DESC.	DATE	APP.

### SPECIFICATIONS

Current Rating:  
2.0 Amp

Insulator Resistance:  
1000 Megohms min.

Contact Resistance:  
30 m ohms max.

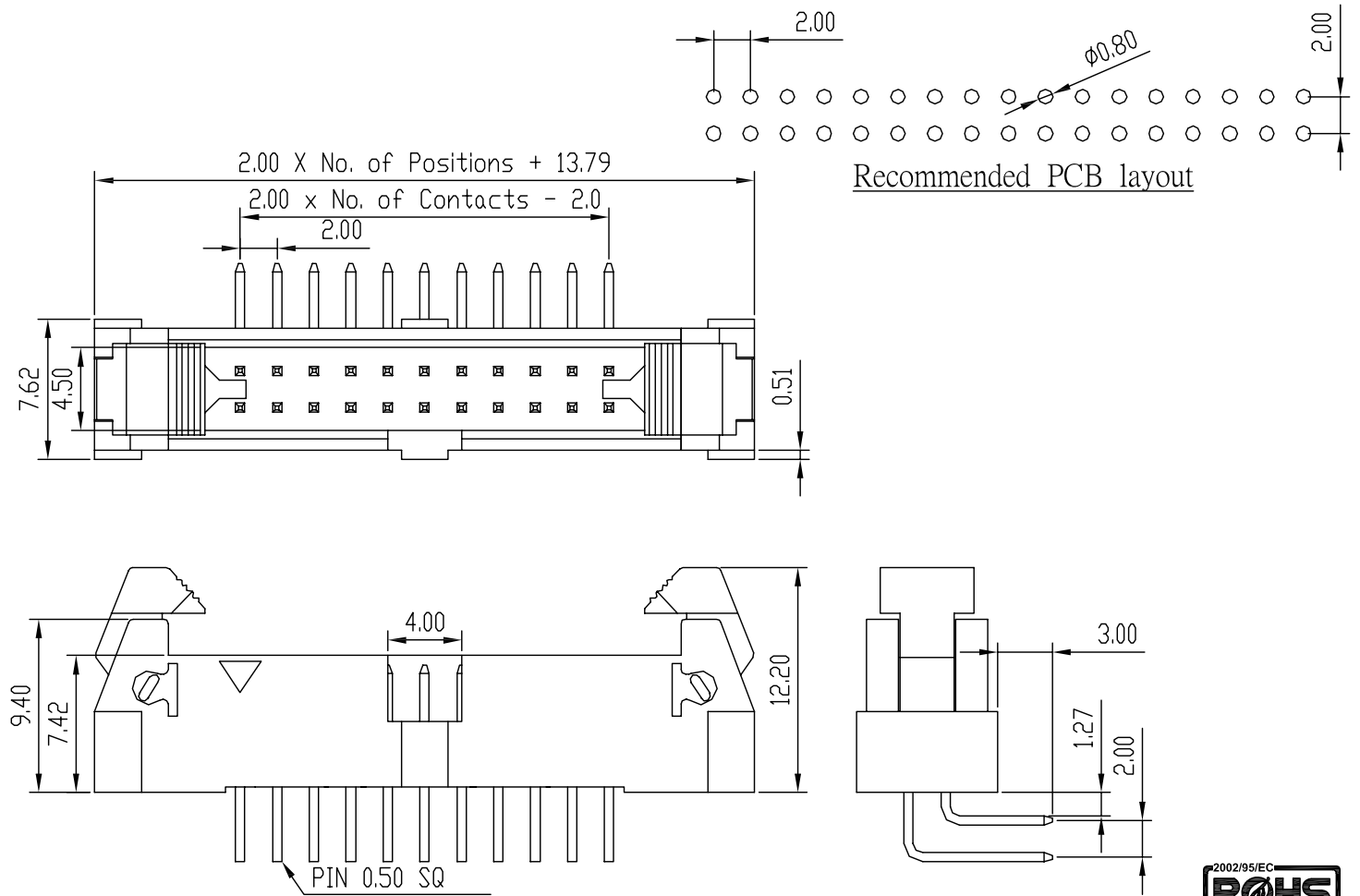
Dielectric withstanding:  
AC 500V/minute

Operating Temperature:  
-40°C to +105°C

Contact Material:  
Copper Alloy

Insulator Material:  
Nylon-6T Glass Filled Polyester  
UL94V-0

Plating: Gold or Tin over 50u" Ni



Recommended PCB layout

BB N B-20 R 05 2 XX-01 G-XX

N: Nylon  
Color  
Pitch 2.00  
Right Angle Type  
Square Pin  
Row of Pin  
Number of Contact

Plastic High  
17:17mm  
G: Gold Plated  
T: Tin Plated  
H: Duplex Plated  
Contact Plating  
01 Normal  
03 3u"  
:

UNLESS OTHERWISE SPECIFIED SURFACE FINISH ALL OVER TOLERANCES mm

METRIC

.X = ±0.38  
.XX = ±0.25

DRAW: *Chubby*

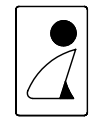
DATE: 01/10/07

CHECK: KEVIN

APPROVE: *TONY*

TITLE: Pitch:2.0mm Ejector Header  
Right Angle Dip Type

MODEL CODE: BBNB-20R052XX-50G-17



誠州電子有限公司  
Sincere State Electronics Co.,Ltd.



NO	DESCRIPTION	QTY	SHEET 1 OF 1
----	-------------	-----	--------------

CUST. MODEL:	REF.
CUST. P/N	DWG FILE:

DESCRIPTION CONTROL			
REV.	DESC.	DATE	APP.

### SPECIFICATIONS

Current Rating:  
2.0 Amp

Insulator Resistance:  
1000 Megohms min.

Contact Resistance:  
30 m ohms max.

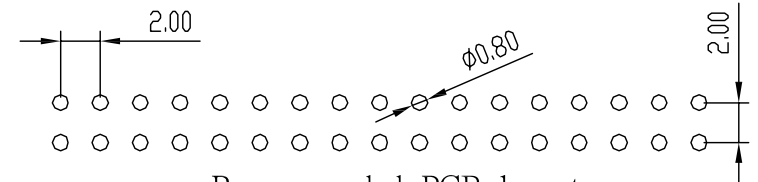
Dielectric withstanding:  
AC 500V/minute

Operating Temperature:  
-40°C to +105°C

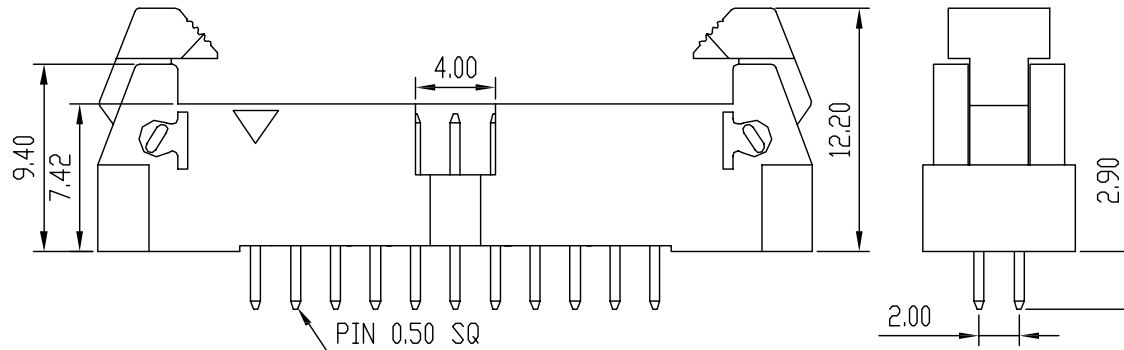
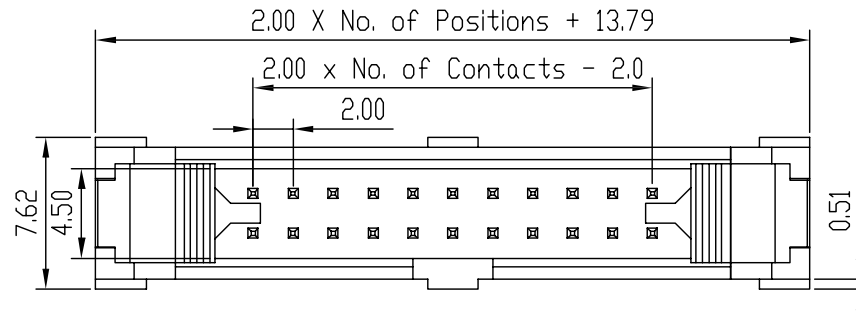
Contact Material:  
Copper Alloy

Insulator Material:  
Nylon-6T Glass Filled Polyester  
UL94V-0

Plating: Gold or Tin over 50u" Ni



Recommended PCB layout



BB N B-20 V 05 2 XX-01 G-XX

N: Nylon  
Color  
Pitch 2.54  
Straight Type  
Square Pin  
Row of Pin  
Number of Contact

Plastic High  
17:17mm  
G: Gold Plated  
T: Tin Plated  
H: Duplex Plated  
Contact Plating  
01 Normal  
03 3u"  
: :  
: :

UNLESS OTHERWISE SPECIFIED SURFACE FINISH ALL OVER TOLERANCES mm

METRIC

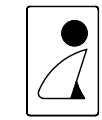
.X = ±0.38  
.XX = ±0.25

DRAW: *Chubby*  
DATE: 01/10/07

CHECK: KEVIN  
APPROVE: *TONY*

TITLE: Pitch:2.0mm Ejector Header  
Straight Dip Type

MODEL CODE: BBNB-20V052XX-50G-17



誠州電子有限公司  
Sincere State Electronics Co.,Ltd.



NO	DESCRIPTION	QTY	SHEET 1 OF 1
----	-------------	-----	--------------