

CUST. MODEL:	REF.
CUST. P/N	DWG FILE:

DESCRIPTION CONTROL			
REV.	DESC.	DATE	APP.
1.0			

Material & Finish

SHELL:Steel Zinc plated,Tin plated

or Nickel plated steel

Pin Contact:Phosphor bronze

Insulator:Nylon 6T UL-94-VO

Current Rating:1 Amp

Dielectric Strength:

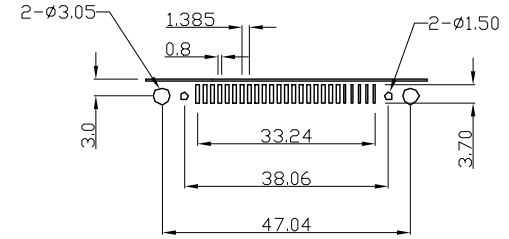
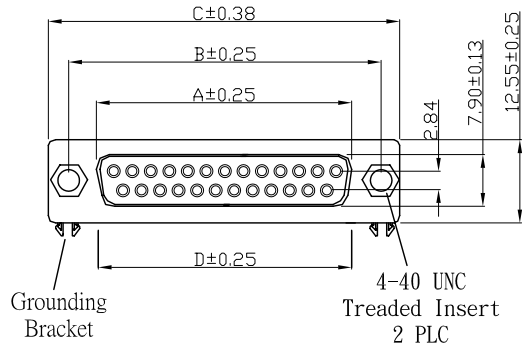
AC 500V Min.(for one minute)

Insulator Resistance:

1000MΩ Min.(at 500V DC)

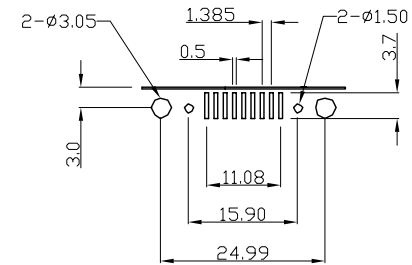
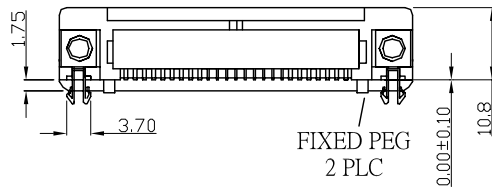
Contact Resistance:13mΩ Max. mated

Temperature:-55°C to +105°C



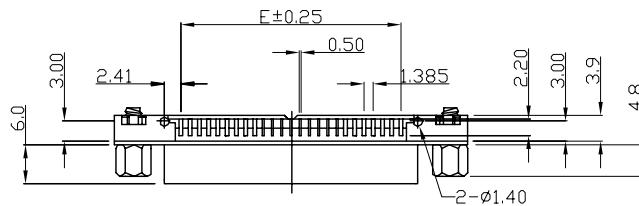
Pin Number:

1 14 2 15 3 16 4 17 5 18 6 19 7 20 8 21 9 22 10 23 11 24 12 25 13
PCB Layout 25Pin

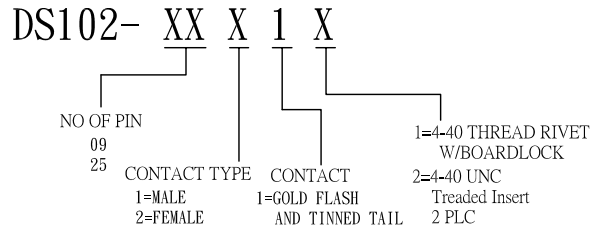


Pin Number:

1 6 2 7 3 8 4 9 5
PCB Layout 9Pin



HOW TO ORDER



	A	B	C	D	E
09	16.33	24.99	30.81	15.90	11.08
25	38.38	47.04	53.04	38.06	33.24

UNLESS OTHERWISE SPECIFIED SURFACE FINISH ALL OVER TOLERANCES mm	DRAW:	DATE:	TITLE:
	Chubby	05/25/03	D-Sub PCB Right Angle Female SMT
	CHECK:	APPROVE:	MODEL CODE:
METRIC	Kevin	TONY	DS102-XX21X
X. = ±0.3 .X = ±0.25 .XX = ±0.15 .XXX = ±0.05			<p>誠州電子有限公司 Sincere State Electronics Co.,Ltd.</p>

NO	DESCRIPTION	QTY
----	-------------	-----